



Total Solution Provider in Saw Device

SL06216BV

62.5MHz IF SAW Filter
16.20MHz Bandwidth
Revision 0 : 20. August. 2008



- Electrical Characteristics
 - Package Dimensions
 - Testing Environment
 - Frequency Characteristics
-

SAWNICS Inc.

460 Cheonheung-ri, Seonggeo-eup, Cheonan-si, Chungcheongnam-do, 330-836 / Korea.
Tel: +82 41 550 9372 / Fax: +82 41 550 9399 / www.sawnics.com

□ Electrical Characteristics

Maximum Ratings

Parameters Description	Unit	Minimum	Typical	Maximum
Operating Temperature Range	°C	-20	-	70
Storage Temperature Range	°C	-40	-	85
Maximum DC Voltage	V	-	-	10
Maximum Input Power	dBm	-	-	10
Source Impedance (single ended) ⁽¹⁾	Ω	-	50	-
Load Impedance (single ended) ⁽¹⁾	Ω	-	50	-
Package type & size	V			
Length x Width	mm ²	-	13.3 x 6.5	-
Height	mm	-	-	1.8

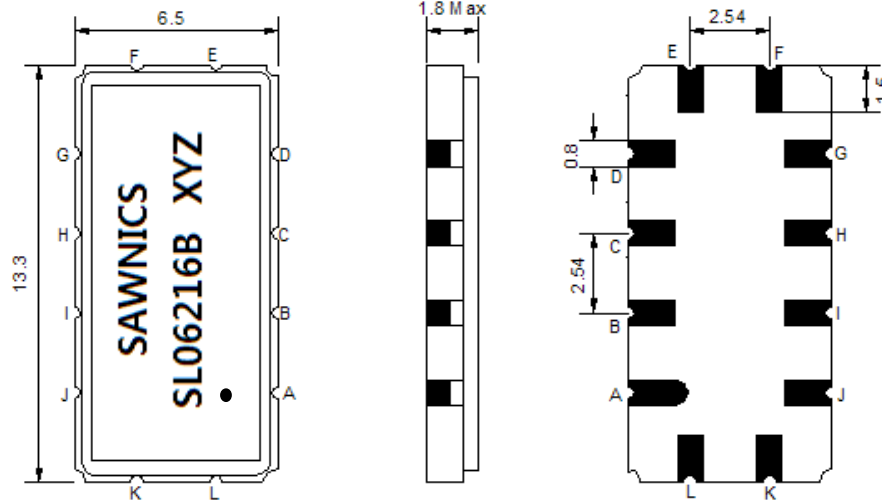
Electrical Specification

Parameters Description	Unit	Minimum	Typical	Maximum
Center Frequency (Fo)	MHz	-	62.5	-
Insertion Loss at Fo	dB	-	13.0	15.0
Temperature Coefficient	ppm/°C	-	-86	-
Amplitude Ripple within fo ±7.4 MHz	dB _{p-p}	-	0.30	0.80
Group Delay Variation within fo ±7.4 MHz	nsec	-	30	60
Absolute Delay at Fo	µsec	-	1.04	-
Bandwidth at -1.0 dB	MHz	15.80	16.20	-
Bandwidth at -3.0 dB	MHz	-	16.98	-
Bandwidth at -40.0 dB	MHz	-	20.10	20.60
Relative Attenuation:				
Lower Sidelobe	dB	45	48	-
Upper Sidelobe	dB	45	48	-

Notes : (1) With Matching Network (Ref. Testing Environment Circuit as shown below).

Those impedances could be modified with different impedance values and/or structures, if necessary.

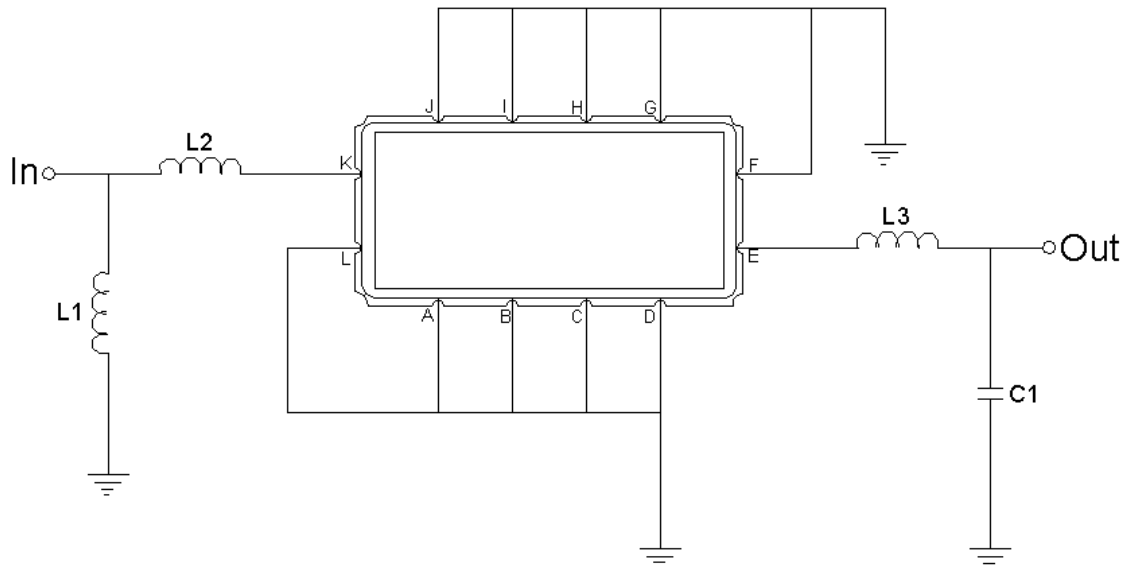
Package Dimensions



- ① SAWNICS: Brand
- ② SL06216B: Model Name
- ③ X : Date Code (Year)
- ④ Y : Date Code (Month)
- ⑤ Z : Date Code (Date)
- : Index Dot

Pin Description	
A, B, C, D, F, G, H, I, J, L	Ground
K	Input
E	Output

Testing Environment



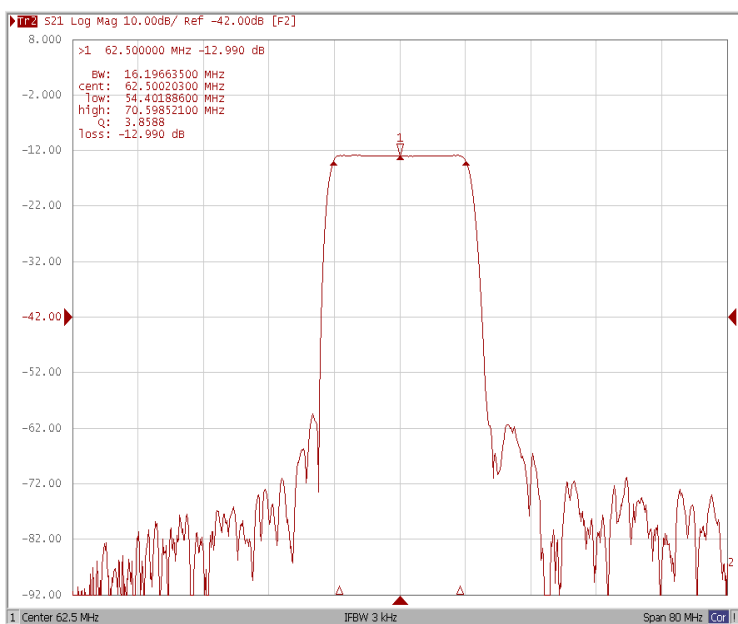
Test Fixture & Values	
Input	L1=120nH , L2=8.2nH
Output	L3=150nH , C1=20pF
Source/Load Impedance	50 Ω



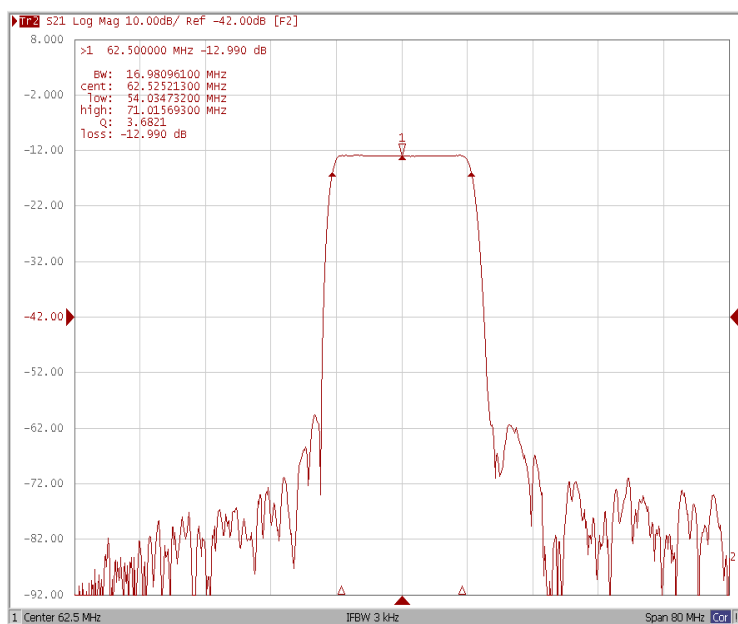
Frequency Characteristics

Frequency Response

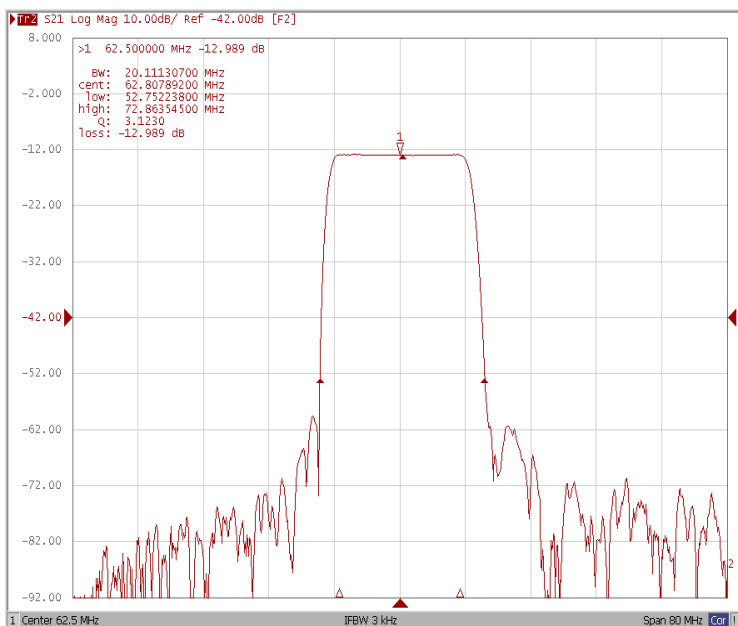
Bandwidth at -1.0 dB



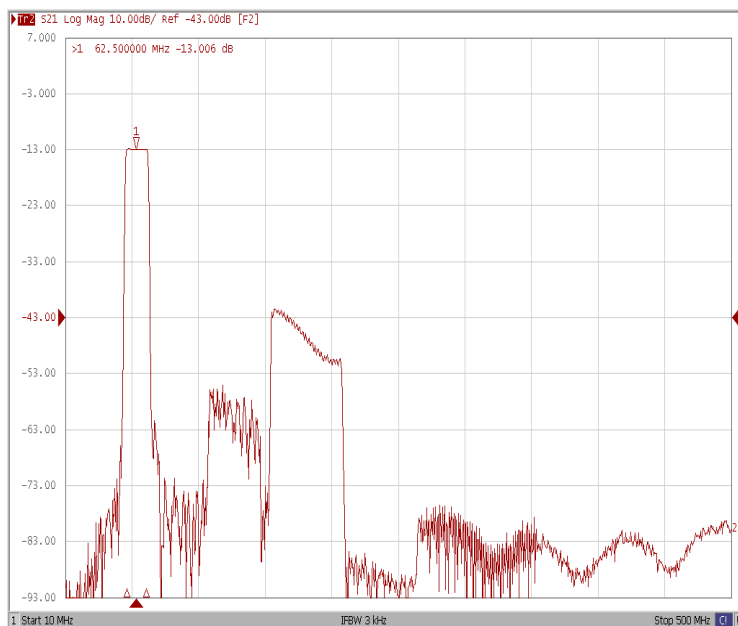
Bandwidth at -3.0 dB



Bandwidth at -40.0 dB



Wide-Band

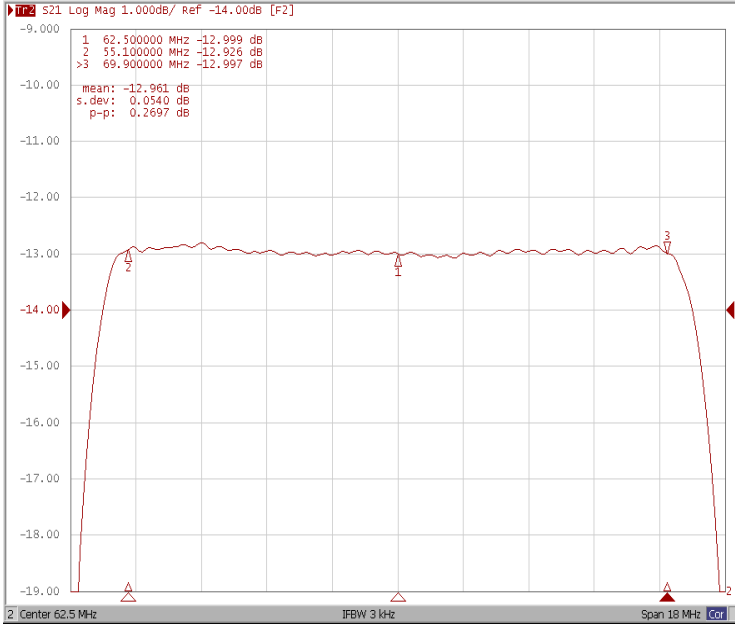




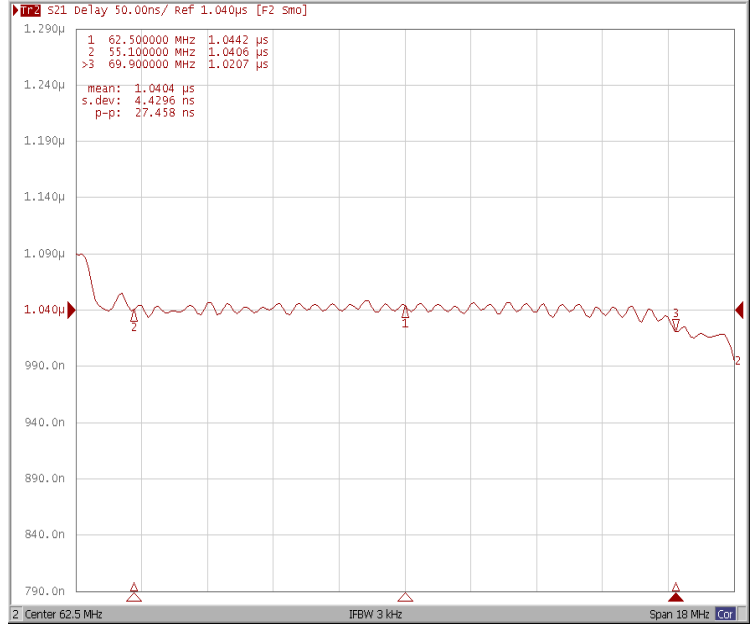
Frequency Characteristics

Frequency Response

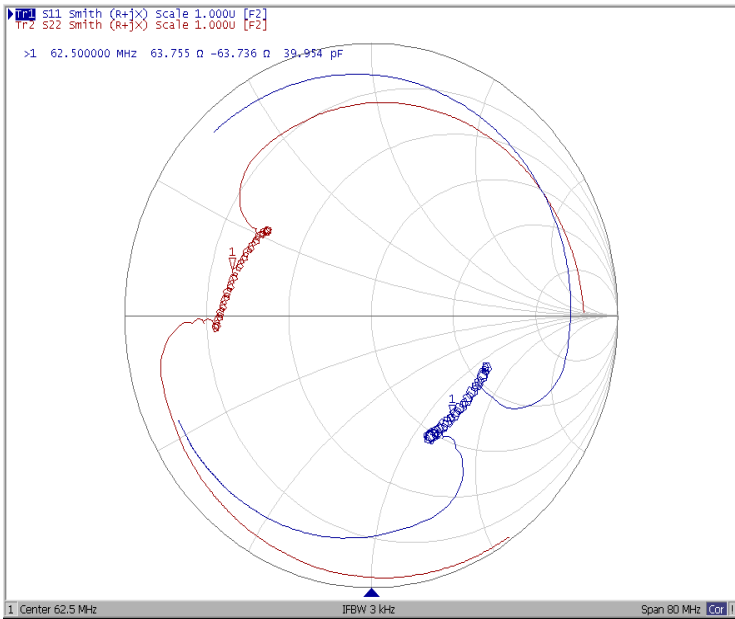
Ripple Variation Fo±7.4MHz



Group Delay Variation Fo±7.4MHz



Smith Chart



VSWR

